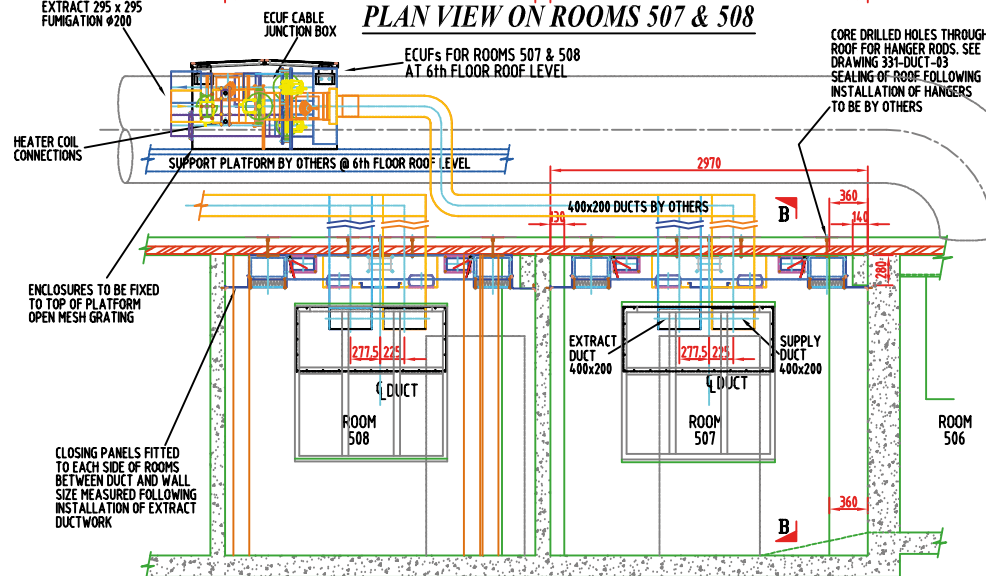
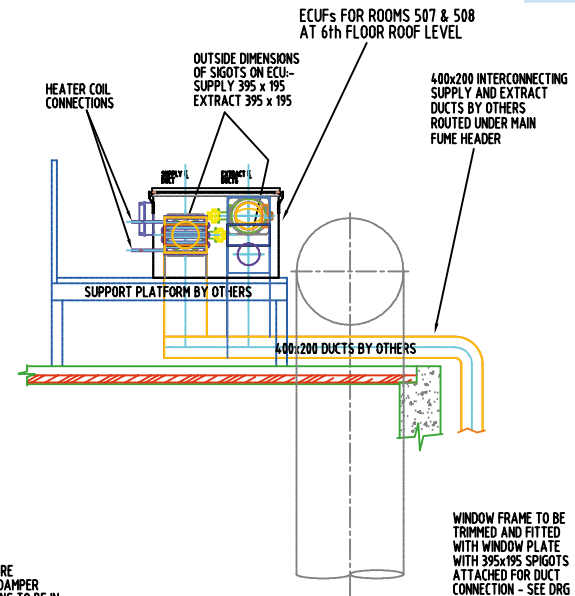


PLAN VIEW ON ROOMS 507 & 508



SECTION 'A-A' THROUGH ROOMS 507 & 508



SECTION 'B-B'

WINDOW FRAME TO BE TRIMMED AND FITTED WITH WINDOW PLATE WITH 395x195 SPIGOTS ATTACHED FOR DUCT CONNECTION - SEE DRG WSC331-BUILD-507-01

PRESSURE RELIEF DAMPER POSITIONS TO BE IN ACCORDANCE WITH ARCHITECTS WALL ELEVATIONS

CORE DRILLED HOLES THROUGH ROOF FOR HANGER RODS. SEE DRAWING 331-DUCT-03 SEALING OF ROOF FOLLOWING INSTALLATION OF HANGERS TO BE BY OTHERS

CLOSING PANELS TO EDGES OF EXTRACT DUCTING WITH 25 RAD COVING BY OTHERS

OUTSIDE DIMENSIONS OF SPIGOTS ON ECU-SUPPLY 295 x 295 EXTRACT 295 x 295 FUMIGATION Ø200

HEATER COIL CONNECTIONS

ENCLOSURES TO BE FIXED TO TOP OF PLATFORM OPEN MESH GRATING

CLOSING PANELS FITTED TO EACH SIDE OF ROOMS BETWEEN DUCT AND WALL SIZE MEASURED FOLLOWING INSTALLATION OF EXTRACT DUCTWORK

ECUFs FOR ROOMS 507 & 508 AT 6th FLOOR ROOF LEVEL

OUTSIDE DIMENSIONS OF SPIGOTS ON ECU-SUPPLY 395 x 195 EXTRACT 395 x 195

400x200 INTERCONNECTING SUPPLY AND EXTRACT DUCTS BY OTHERS ROUTED UNDER MAIN FUME HEADER

HEATER COIL CONNECTIONS

SUPPORT PLATFORM BY OTHERS

400x200 DUCTS BY OTHERS

PRESSURE RELIEF DAMPER

ROOM 508

DUCT

ROOM 507

DUCT

RAMP

350 PRD

PRESSURE RELIEF DAMPER

ECUF CABLE JUNCTION BOX

ECUFs FOR ROOMS 507 & 508 AT 6th FLOOR ROOF LEVEL

SUPPORT PLATFORM BY OTHERS @ 6th FLOOR ROOF LEVEL

400x200 DUCTS BY OTHERS

EXTRACT DUCT 400x200

SUPPLY DUCT 400x200

ROOM 508

ROOM 507

ROOM 506

SUPPLY AND EXTRACT DUCTS 400x200

Room 507

DOORWAY

400x200 DUCTS BY OTHERS

2210.5 TO CL. DUCT SPIGOTS THROUGH WINDOW

2510
2315
2115 TO INSIDE ROOM DUCTS
2095 MAXIMUM
715 STAND